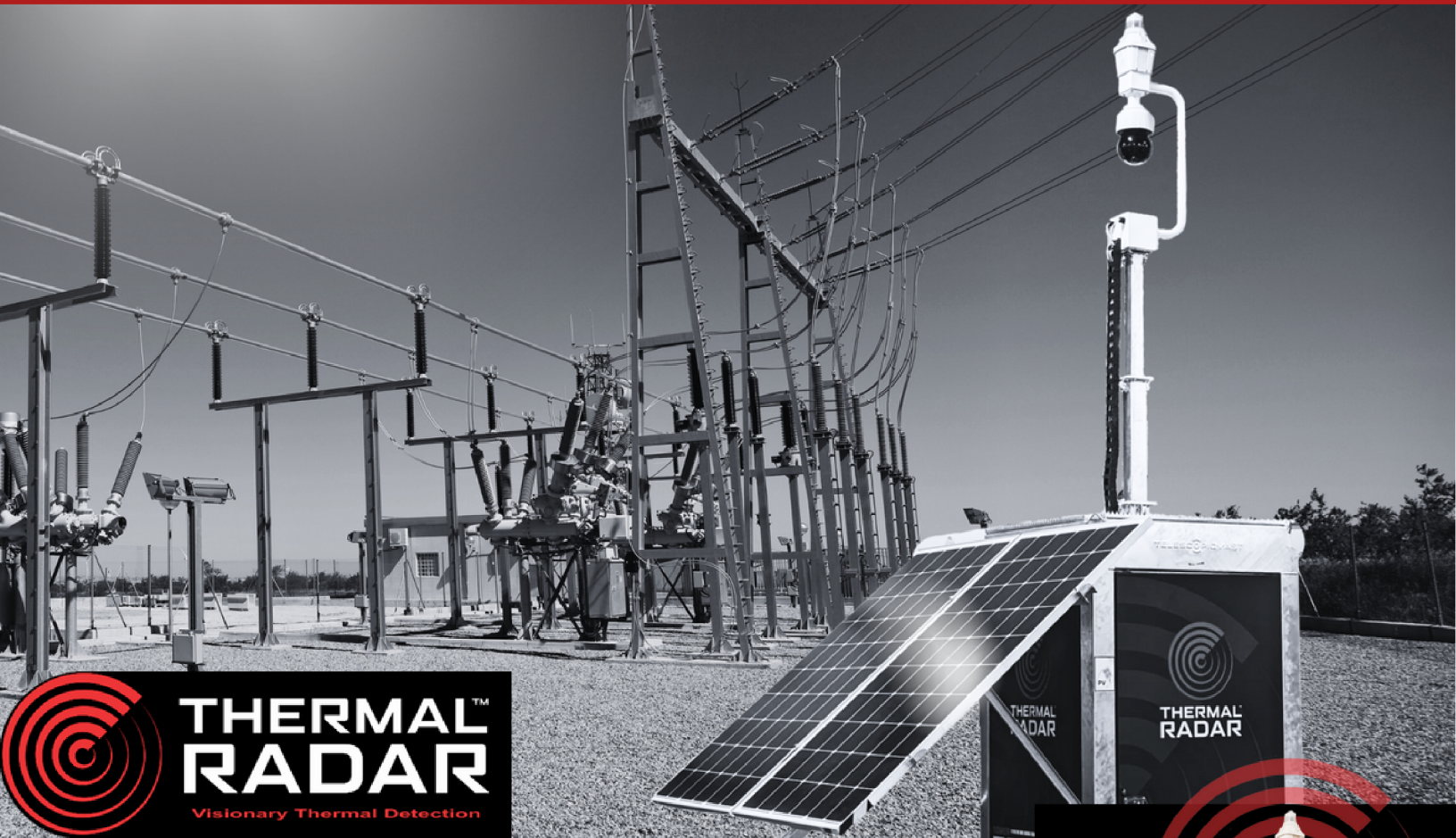


TOWER SENTRY

RAPID-DEPLOY THREAT DETECTION SOLUTION



➔ Autonomous Surveillance Solution:

The Thermal Radar Tower Sentry is an autonomous intrusion detection and surveillance solution made of the highest quality materials. With vandalism-proof, heavy-gauge galvanized steel framing and walls, a rapidly deployed 19.5-foot mast, and an IP66-rated component enclosure, the Tower Sentry becomes an all-weather, remote surveillance outpost protecting your facility and critical assets. The Tower Sentry can also be custom branded allowing for additional communication and messaging as well as maximum advertising and promotion exposure.

➔ Robust Components and Renewable Power:

The Tower Sentry employs quality networking components including an 8-port network switch, relay modules (optional), 4G/Wi-Fi Router, built-in remote monitor & control module, power management, and an optional PC for your choice of VMS platforms. The standard solar power package includes two (2) 400-watt solar panels and 250 Ah battery storage. The Tower Sentry can also be equipped with an environmentally friendly methanol fuel cell to extend the autonomous performance of the onboard systems.

➔ Flexible Solution:

The Tower Sentry can be customized with any model of Thermal Radar as well as a variety of PTZ camera options or can be purchased as a bare unit and outfitted with your choice of cameras and accessories. Additionally, the Tower Sentry can be equipped with a talk-down / audible alarm speaker, strobe lights, LED lights, and Point-to-Point communications.



DETECTION FLEXIBILITY



THERMAL RADAR™
Visionary Thermal Detection



WIDE-AREA DETECTION:

Thermal Radar provides true situational awareness and continuous 360° thermal intrusion detection with a human detection coverage area of up to 200 acres (based on environmental conditions). Thermal Radar should be the centerpiece of any advanced physical security strategy in protecting your facility and critical assets.

POWERFUL THERMAL VIDEO ANALYTICS:

Thermal Radar uses edge-based analytics which allow users to quickly customize the areas of interest needed to protect the most vulnerable regions of their property. Users can implement and adapt a full 360° intrusion detection strategy with just a few mouse clicks within the Thermal Radar user interface.

FLEXIBLE ALERT AND MONITORING PLATFORM:

Thermal Radar alarms are generated when intruders enter specified areas of interest. Intrusion alarms activate notification alerts into the VMS platform at your security operation center (SOC) and/or to your mobile device. After receiving an alert, monitoring personnel can remotely view the alarm recordings and instantly monitor the live video feeds from the camera systems and deploy appropriate countermeasures.



HYDRA
POWERED BY THERMAL RADAR



CAMERAS:

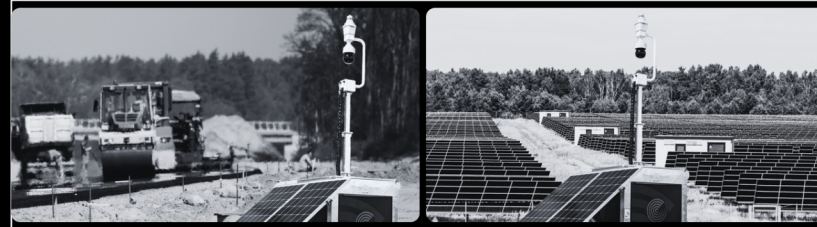
Enhance your surveillance to full 360° continuous coverage with the Thermal Radar Hydra, which combines your choice of PTZ with any Thermal Radar model, or install your choice of camera.

SMARTER SURVEILLANCE:

Thermal Radar employs a unique “inside-out” approach to perimeter protection by detecting an intruder prior to an incursion of the property using user-defined areas of interest. Unlike other perimeter security solutions, Thermal Radar continues to detect and target intruders following an unauthorized incursion into the property.

TARGETED INTRUSION DETECTION:

Thermal Radar Hydra intrusion alarms trigger an immediate slew-to-cue response from the pan-tilt-zoom (PTZ) camera positioned directly below the Thermal Radar allowing for confirmation of the detected intruder. Thermal Radar has direct integrations with most mainstream and NDAA-compliant PTZ cameras.



TOWER SENTRY TECHNICAL SPECIFICATIONS

PHYSICAL DIMENSIONS		POWER SUPPLY AND BATTERIES	
Material	Heavy-Duty Hot-Dipped Galvanized Steel	Solar Power	Two (2) 400-watt panels
Weight	920-1550 lbs (417-703 kg)	Batteries	250 Ah @ 24v DC (Lithium Option Avail.)
Mast Height	Expandable to 19.5 ft (6m)	Solar Panel Actuation	Manual
Dimensions	40" (W) x 40" (L) x 92" (H) (1m x 1m x 2.7m)		
COMMUNICATION OPTIONS		COMPATIBILITY	
Antennas	Wi-Fi and Cellular	Thermal Radar	All Models
Point-to-Point	Network connection available	Hydra	All Models
		PTZ and IP Cameras	All Models
INTERNAL COMPONENTS		OPTIONAL ACCESSORIES	
VMS PC	PC, Windows 10 Pro (Optional)	Optional Batteries	250 Ah additional 500Ah (Lithium Option Avail.)
Storage	512 GB OS, 1 TB Video Data (Optional)	Supplemental Power	125-watt EFOY Fuel Cell
Components	Router, Network Switch, Remote Power Monitor, Power Supplied, Custom Wiring, Relays (when required)	Deterrent Package	LED Lights, Strobe, Speaker, Relays