



**THERMALTM
RADAR**
Visionary Thermal Detection

Cost-Effective 360° Threat Detection



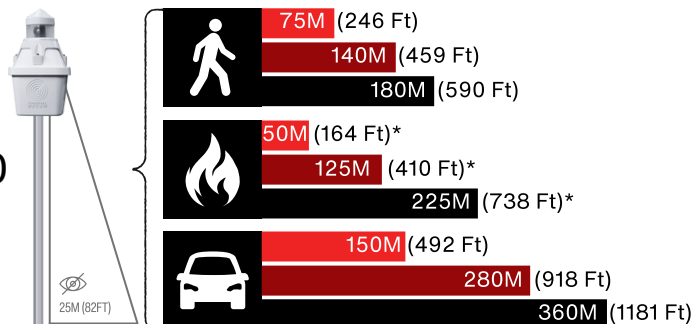
Thermal Radar is a patented network-based thermal surveillance and detection solution providing constant 360° situational awareness. By rapidly rotating a best-in-class thermal sensor and running edge analytics, Thermal Radar can be used as a stand-alone detection outpost or the centerpiece of your integrated physical security strategy. The patented Thermal Radar system integrates with VMS and PSIM platforms and displays the full 360° detection area, integrated geospatial map, and event alerts.

DETECTION RANGES

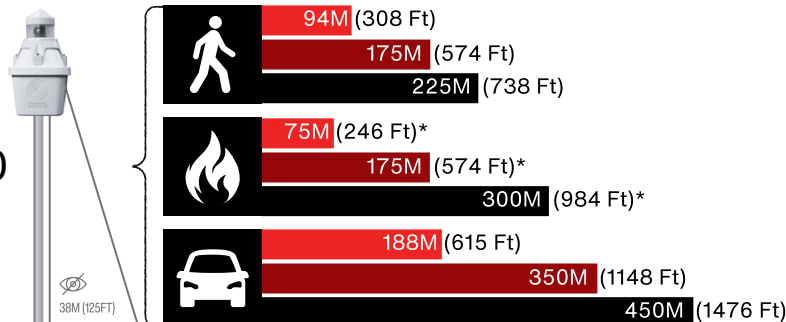


**THERMAL
RADAR™**
Visionary Thermal Detection

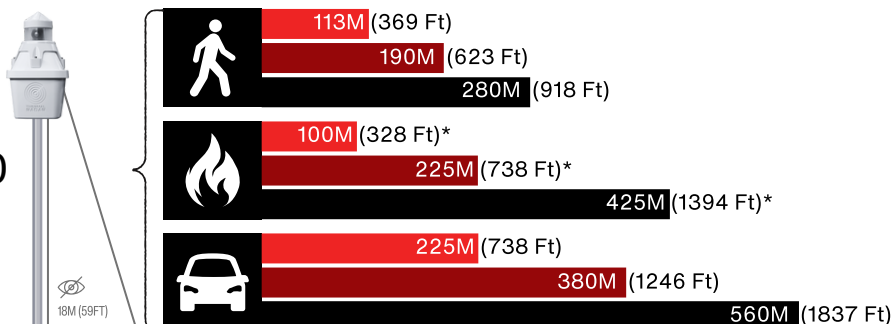
TR3200



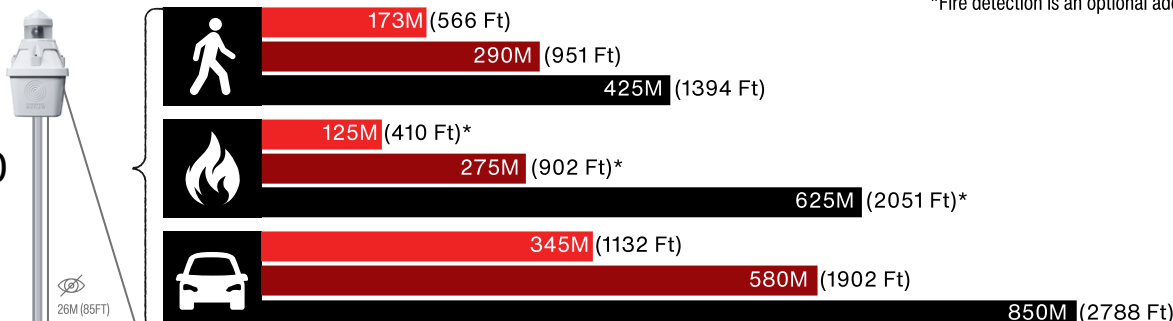
TR3300



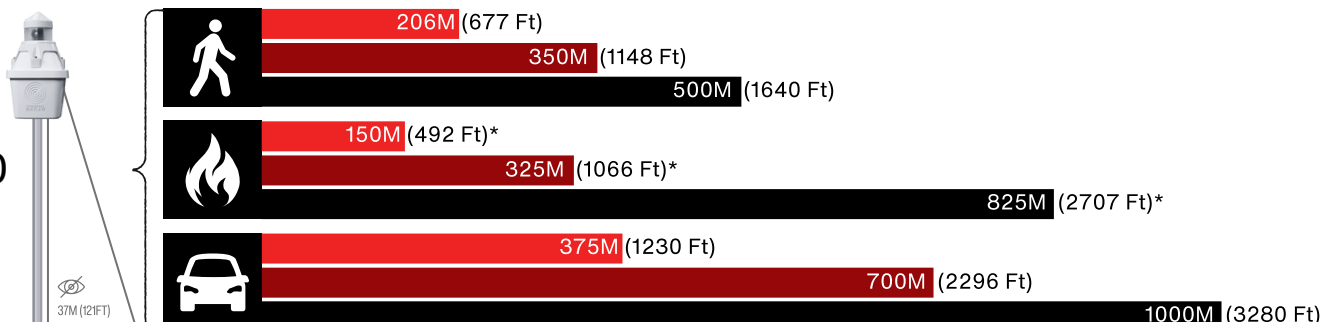
TR6200



TR6400



TR6600



High Confidence Distance

Mid-Range Distance

Maximum Distance



Actual detection ranges may vary significantly depending on environmental factors, installation specifics, and other variables unique to the location. High humidity, for example, can reduce thermal contrast and impact detection performance, particularly over longer distances. Therefore, the distances shown here should be used as general estimates and not definitive guarantees of performance. We recommend consulting with security experts or certified installers to ensure the product and its installation align with your specific security requirements.

*Fire detection is an optional add-on

Thermal Radar's fire detection analytics are designed to enhance early fire detection through advanced thermal imaging technology. However, performance may be influenced by atmospheric conditions such as fog, smoke, rain, snow, and humidity, which can affect visibility, detection accuracy, and range. Additionally, factors like fire size, intensity, growth rate, and the fire's distance from the camera may impact the system's ability to detect fires in a timely manner. This product does not guarantee the detection of all fires or the protection of property, assets, or individuals from fire-related damage or harm. Thermal Imaging Radar assumes no liability for fires that are not detected, or for any loss, injury, or damage resulting from a fire, regardless of the system's operational status. It is recommended that the Thermal Radar system be used as part of a comprehensive, multi-layered security and fire safety plan.

SPECIFICATIONS

3- and 6-Series



**THERMAL
RADAR™**
Visionary Thermal Detection

	3-Series	6-Series
THERMAL IMAGER		
Type	Uncooled VOx Microbolometer	Uncooled VOx Microbolometer
Frame Rate	9Hz/60Hz	9Hz/60Hz
FPA Resolution	320	640
Image Bit Depth	2.3 - 16 bit thermal infrared	2.3 - 16 bit thermal infrared
Lens Focal Length	2.3mm -13.8mm	8.7mm - 24mm
Configuration	White hot or black hot configurable	White hot or black hot configurable
SPEED AND FIELD-OF-VIEW		
Rotation Speed	Between 15 and 60 RPM	Between 15 and 60 RPM
Image HFOV	360°	360°
Image VFOV	19° - 40°	14° - 39°
POWER REQUIREMENTS		
Input Power	IEEE PoE+ (802.3at) – LTPoE++ (90W)	IEEE PoE+ (802.3at) – LTPoE++ (90W)
Input Connection	RJ 45	RJ 45
Power Consumption	Less than 20 watts	Less than 20 watts
PROCESSOR AND ANALYTICS		
Processor	Quad Core 64-bit	Quad Core 64-bit
Memory	4GB Ram (Upgrade Available)	4GB Ram (Upgrade Available)
Embedded Analytics	Intrusion (Security) & Fire Detection	Intrusion (Security) & Fire Detection
Available Analytics	Optional Advanced AI-Powered Analytics for Enhanced Classification and Deeper Data Insights	
Detection Zones	Configurable areas of interest, exclusions, motion filters, skip stations, and priority zones	
COMMUNICATION/NETWORK SECURITY		
Ethernet	Autoswitch 100 Mbps–1 Gbps	Autoswitch 100 Mbps–1 Gbps
Network Security	HTTPS & TLS with password protection	HTTPS & TLS with password protection
ENVIRONMENTAL		
Operating Temperature Range	-35° to + 60° C (Up to 75° C Available)	-35° to + 60° C (Up to 75° C Available)
Storage Temperature Range	-35° to + 85° C	-35° to + 85° C
Protection Standard	IP67	IP67
PHYSICAL		
Dimensions	5.75" (W) X 7.075" (H) (146 mm X 197mm)	5.75" (W) X 7.075" (H) (146 mm X 197mm)
Weight	<7 lbs. (3 Kilos)	<7 lbs. (3 Kilos)
GENERAL		
PTZ Integration	PTZ Slew-to-Cue commands upon detection	PTZ Slew-to-Cue commands upon detection
VMS Integration	ONVIF compliant RTSP stream, alerts	ONVIF compliant RTSP stream, alerts
Warranty	2 Years	2 Years
RTSP VIDEO OUT		
Video Compression & Streaming	H.264	H.264
Resolution	Panoramic Stream Resolution 1080p	Panoramic Stream Resolution 1080p
Thermal Frame Rate	4 - 30 FPS	4 - 30 FPS



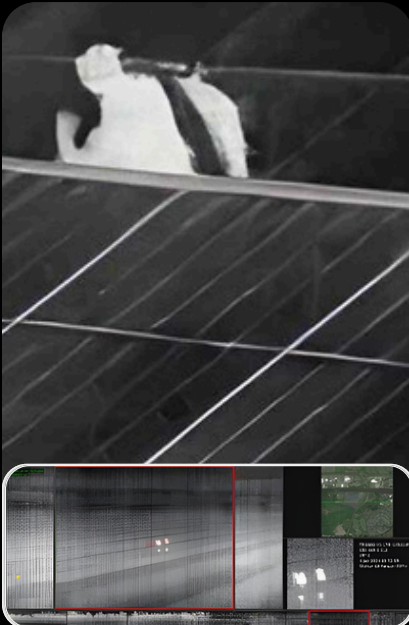


**THERMAL
RADAR™**
Visionary Thermal Detection

Simultaneous detection of multiple targets.



Patented thermal video feed displaying full 360° coverage area.



Provides slew-to-cue functionality to an integrated PTZ.

Geospatial location-based detection alerts.

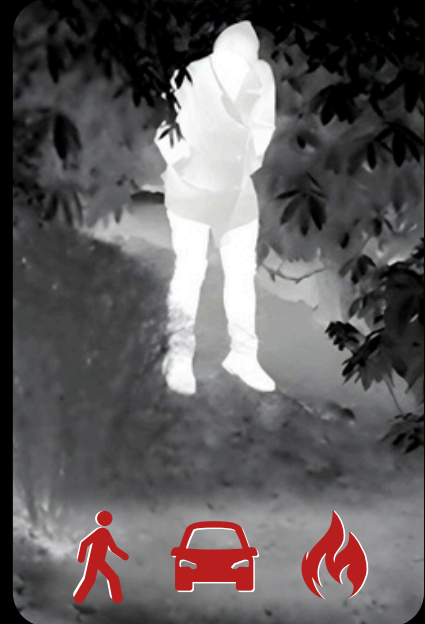


Reduces device count, infrastructure & licensing costs.

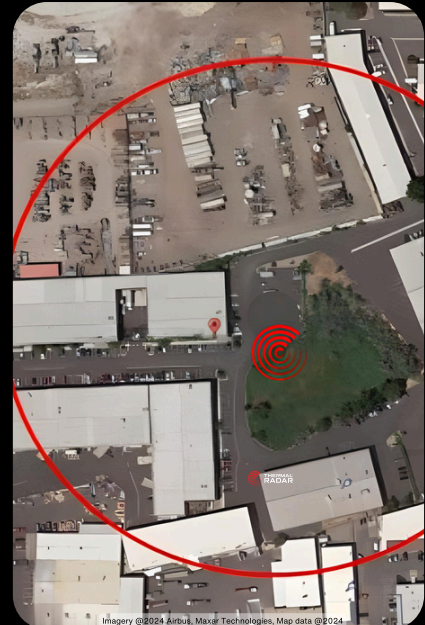


No export license is required for most international applications.

Edge analytics for human, vehicle, and fire detection.



Passive thermal detection and surveillance solution.



Proprietary adaptive analytics result in low false-positive alerts.

Patented Protection Customized for Your Organization